



# Performing Arts Department



Family Learning Ideas for S3 Broad General  
Education Skills Development

*To provide a learning environment where every young person is happy, safe and achieving their potential*

Ambition

High Expectations

Continuous Improvement

Inclusiveness

Tolerance

Compassion

Embracing Change

Respect



# Today we will look at:

- How to support pupils with practical work at home
- How to develop evaluation skills
- Where to find extra support

*To provide a learning environment where every young person is happy, safe and achieving their potential*



# How To Support Pupils With DRAMA Practical Work At Home



*To provide a learning environment where every young person is happy, safe and achieving their potential*

- Help pupils to go over lines by reading the other parts in the script and prompting them if they forget.
- Practice imitating others' voices by listening to other members of your family and doing impersonations.
- Listen to accents in TV shows and Movies and focus on the vowel sounds.
- *If you attend a live theatrical performance discuss and analyse the production afterwards.*

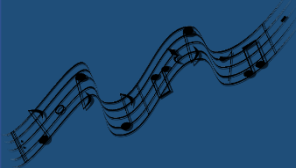


# How To Support Pupils With DRAMA Practical Work At Home



*To provide a learning environment where every young person is happy, safe and achieving their potential*

- *Encourage pupils to record their lines and listen back to them when brushing teeth etc.*
- *Pause TV shows and Movies and analyse key moments, identify what the actor is doing to communicate an idea or feeling.*
- *Pause TV shows and Movies and discuss how the time period or themes are suggested through use of set, props, costume, make-up, sound and lighting.*



*To provide a learning environment where every young person is happy, safe and achieving their potential*

# How To Support Pupils With MUSIC Practical Work At Home

- Ask pupils to play through their pieces in front of family members; this will get them used to performing in front of others.
- Encourage them to continue playing if they make a mistake.
- Encourage them to use a metronome App when practicing to keep in time.
- Listen to music together and discuss what instruments/concepts you can hear.



# Evaluation Skills

- Evaluation means to give your opinion based on facts; to indicate how successfully or unsuccessful something was.
- Pupils will undertake Self and Peer Evaluation throughout their BGE Drama and Music Courses.
- Pupils often make statements about what they did as opposed to explain why their work was effective.
- Pupils should be encouraged to make their evaluation more specific.

*To provide a learning environment where every young person is happy, safe and achieving their potential*



# Evaluation Skills

- Pupils must state their opinion e.g. *I thought my performance was successful*
- Pupils must justify their opinion e.g. *I thought my performance was successful because I got all the way through the piece without stopping.*

→ You can help at home by watching TV Shows/Movies/Live Concerts then discussing and evaluating the performance

To provide a learning environment where every young person is happy, safe and achieving their potential



# Evaluation Skills

- Examples of Drama Practical Performance evaluative statements:
- “I was successful at portraying my character's intentions through acting concepts. I used indirect eye contact and suspicious body language to show I was lying.”
- “Whilst making a prop knife I struggled to get the shape right. It looked too cartoonish as it was too round. I squared off the edges which made it look like a more realistic knife.”

*To provide a learning environment where every young person is happy, safe and achieving their potential*





# Evaluation Skills

- Examples of Musical Composition evaluative statements:
- "I decided to give my piece an older sound by using a mode, and chose the Aeolian mode, the white note scale from A to A."
- "I developed the melody by adding quaver passing notes, plus a *molto rit* to give the music a feeling of a conclusion and sadness."

To provide a learning environment where every young person is happy, safe and achieving their potential



# Evaluation Skills

- Examples of Music Tech Project evaluative statements:
- “The de-esser helped make my 's' sounds less harsh but I think I could have done more with to make them quieter but not muddy.”
- “I'm not quite happy with how the vocals sound in the game show as I felt I could have spent more time with EQ to make them fit better. I kept boosting frequencies and I think it would have been better if I had flattened the EQ and started again instead of boosting everything.”

*To provide a learning environment where every young person is happy, safe and achieving their potential*



# Where To Find Extra Support

- *Encourage them to rehearse at lunchtime – Performing Arts Teachers are happy to support pupils with additional rehearsals.*
- *Direct them to the Performing Arts page on the School Website: Learning – Departments – Performing Arts – Useful Resources*
- *Here you will find lots of useful links and documents to help with revision.*

*To provide a learning environment where every young person is happy, safe and achieving their potential*



## • DRAMA LINKS

- <https://quizlet.com/join/dqTvwE8zx>
- <https://www.bbc.co.uk/education/subjects/zbckjxs>
- <https://www.digitaltheatre.com/>

## • MUSIC LINKS

- <https://quizlet.com/subject/lenziemusic/>
- [www.ataea.co.uk](http://www.ataea.co.uk)
- <https://www.mydso.com/dso-kids/>
- <https://www.bbc.co.uk/education/subjects/zpf3cdm>

*To provide a learning environment where every young person is happy, safe and achieving their potential*



# Are there any questions?



*To provide a learning environment where every young person is happy, safe and achieving their potential*

Ambition

High Expectations

Continuous Improvement

Inclusiveness

Tolerance

Compassion

Embracing Change

Respect